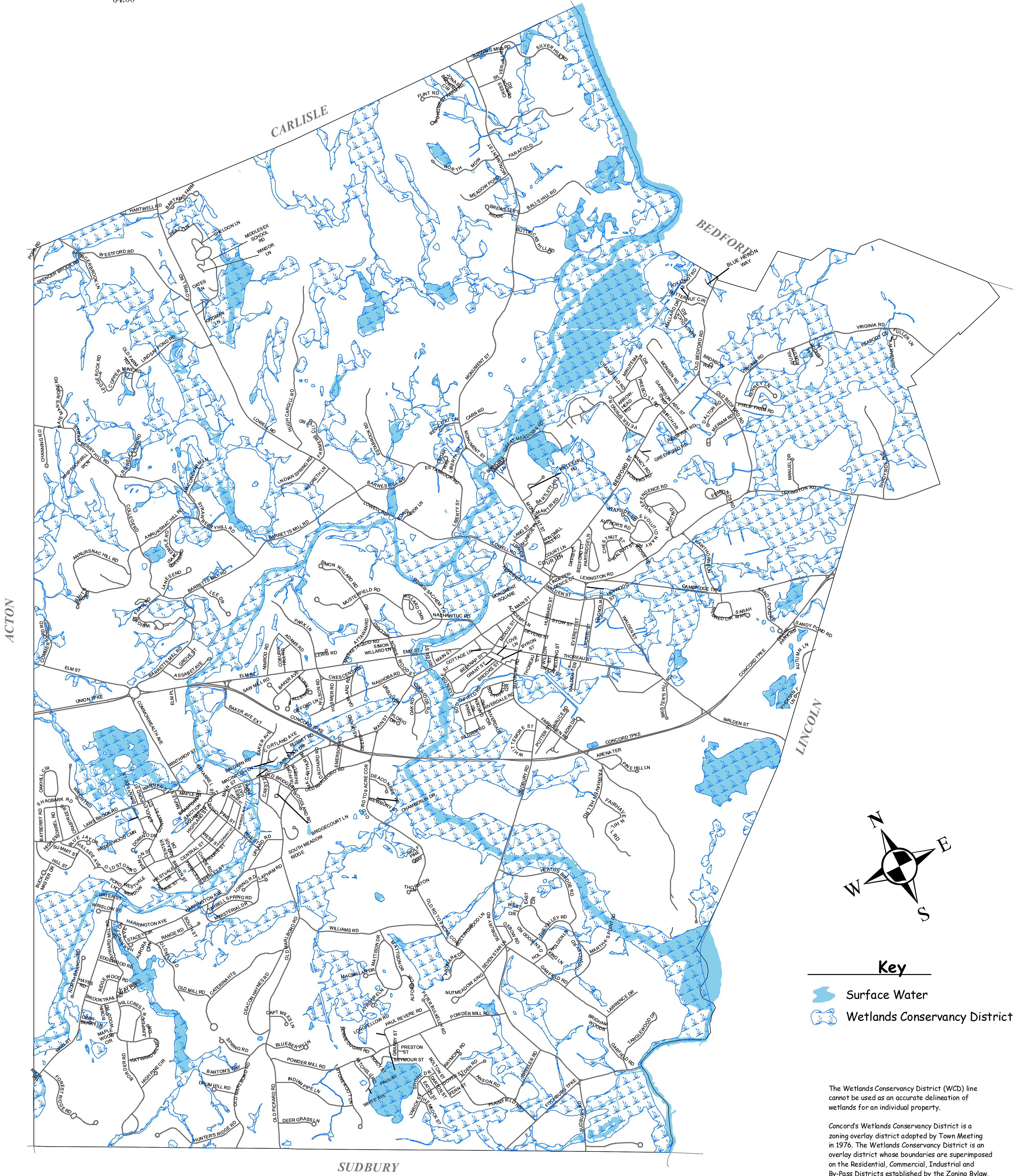


TOWN OF
CONCORD
MASSACHUSETTS

Wetlands
Conservancy
District

\$4.00



Key

- Surface Water
- Wetlands Conservancy District

The Wetlands Conservancy District (WCD) line cannot be used as an accurate delineation of wetlands for an individual property.

Concord's Wetlands Conservancy District is a zoning overlay district adopted by Town Meeting in 1976. The Wetlands Conservancy District is an overlay district whose boundaries are superimposed on the Residential, Commercial, Industrial and By-Pass Districts established by the Zoning Bylaw. This overlay district is based on a 1975 study prepared for the Town using aerial photographs and on the ground investigation with information presented on a series of 122 maps at a scale of 1-inch equals 100-feet. This zoning overlay district has not been updated since 1976 and cannot be used as the actual location of a wetland.

Wetlands are defined by and subject to the State's Wetlands Protection Act and Rivers Protection Act. For the purpose of permitting under these regulations, wetlands are delineated under the Wetlands Protection Act (Chapter 131, Section 40) and its accompanying regulations at CMR310.10.00 et al. For more information about wetlands, contact the Town of Concord's DPLM - Natural Resources Division.

The data for the Wetlands Conservancy District as presented in the Town's Geographic Information System (GIS) is expected to be used for a variety of planning applications including broad-based review for wetlands management, land-use planning, commercial siting and real estate development analysis, natural resource analysis, and so forth. This data is intended to provide support for but not to replace the paper maps created for the Town's Wetlands Conservancy District available in the Department of Planning and Land Management offices (Natural Resources Division and Planning Division).

This map was created by Concord GIS. The information is provided as a reasonably accurate point of reference, but is not intended to represent authoritative location, and is not to be used for conveyances. The Town of Concord shall not be held responsible for the accuracy or misuse of these data.

