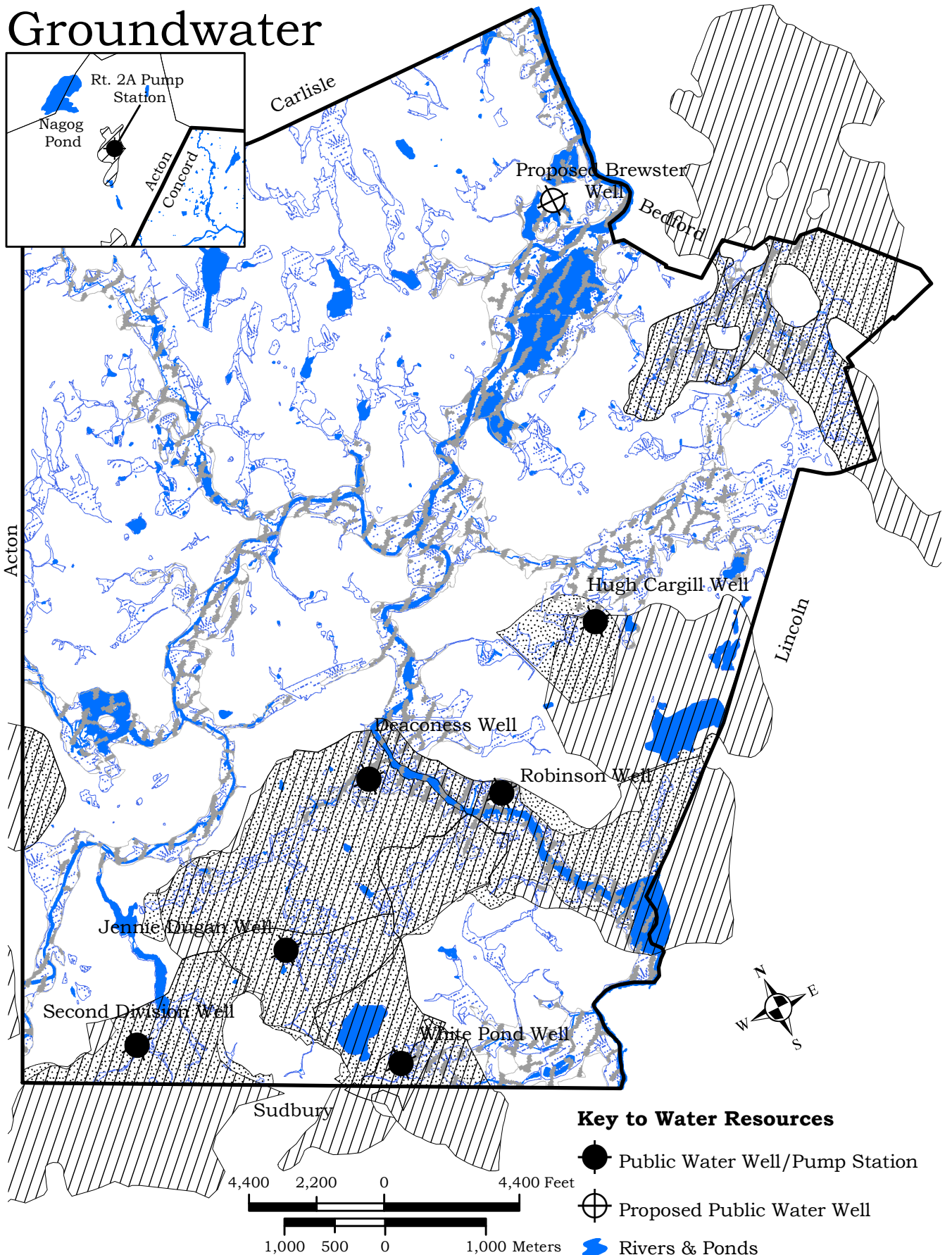









Wetlands, Floodplains & Groundwater



**Zone 2 Area: The land area that contributes groundwater to a water supply well as a result of sustained withdrawal from the aquifer.

Key to Water Resources

-  Public Water Well/Pump Station
-  Proposed Public Water Well
-  Rivers & Ponds
-  Zone 2 Area**
-  Floodplain Conservancy District
-  Wetlands Conservancy District
-  Groundwater Conservancy District